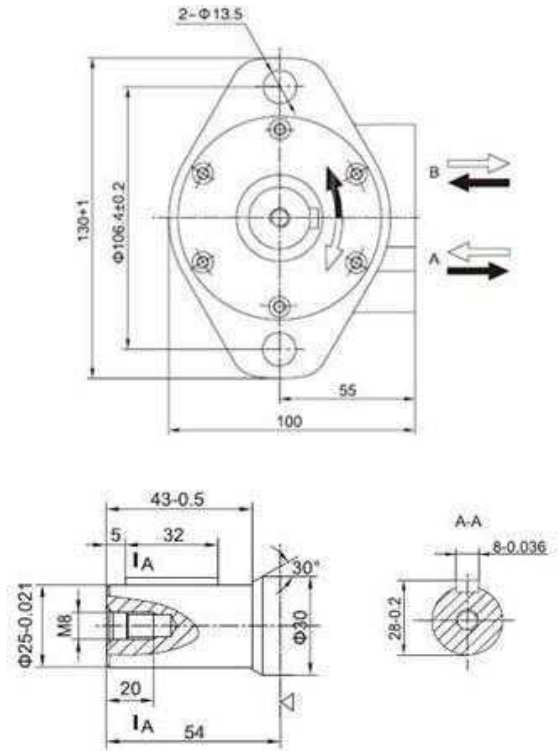
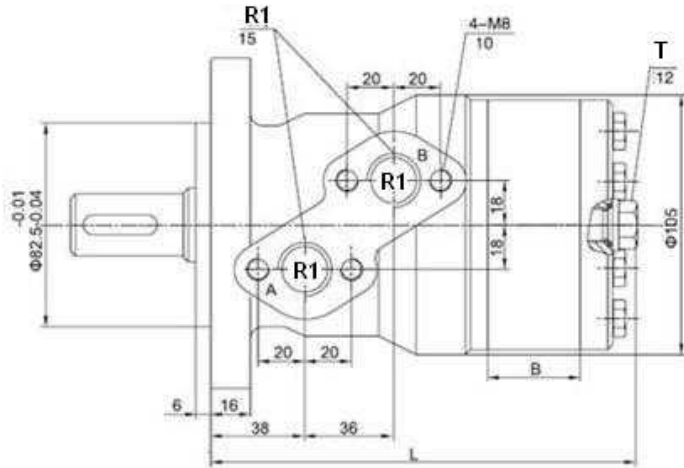


MOMR type motors



Shaft: cylindrical shaft, diameter 25 mm

Max. flow interm.: MOMR50 =50 (l/min); Others=75 (l/min)

T: drainage line, thread 1/4"

Power in kW. Torque in daN.m

Part n°	R1	Max. flow (l/min)	Max. press. cont.	Max. Peak press.	cm ³ /rev	R.P.M. cont.	R.P.M. int.	Max. torque cont.	Max. torque peak	Max. power cont.	Max. flow cont.	B	L
MOMR50	1/2"	40	140	210	50	770	970	10	16,8	6,9	40	9	139
MOMR80	1/2"	60	160	210	80	745	940	19,6	27	12,6	60	14	144
MOMR100	1/2"	60	160	210	100	600	750	24,2	32,1	12	60	17,5	148
MOMR125	1/2"	60	160	210	125	470	600	27,1	36,8	12,4	60	22	152
MOMR160	1/2"	60	160	210	160	370	470	38,9	45,8	11,4	60	28	158
MOMR200	1/2"	60	135	210	200	300	370	38,5	56	9	60	35	165
MOMR250	1/2"	60	105	200	250	240	300	38,8	65,5	6,4	60	44	174
MOMR315	1/2"	60	85	175	315	190	240	38,5	83	6	60	56	186
MOMR400	1/2"	60	65	175	400	150	190	35,5	71,3	4,7	60	70	200

*Intermittent operation rating applies to 6 seconds of every minute.

*Peak load rating applies to 0.6 seconds of every minute.