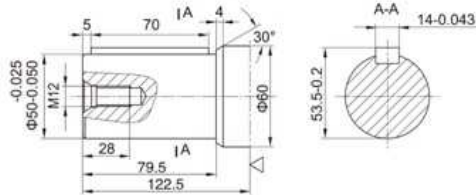
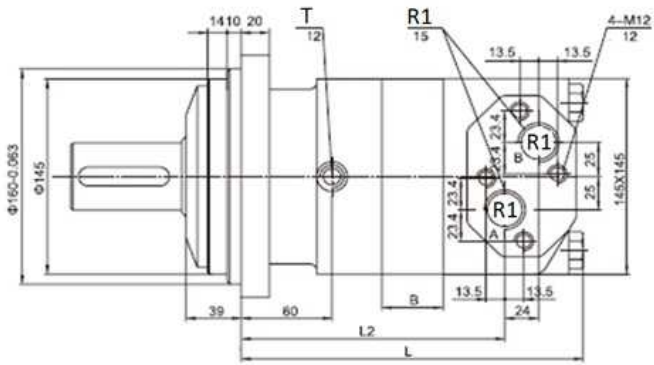
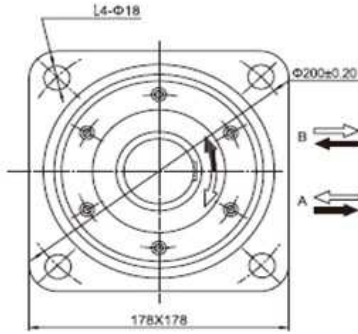


Hydraulic motors
Hydraulic motors

MOMV type motors



Shaft: cylindrical shaft, diameter 50 mm

T: drainage line, thread 1/4"

Power in kW. Torque in daN.m

Part n°	R1	Max. flow (l/min)	Max. press. cont.	Max. Peak press.	cm ³ / rev	R.P.M. cont.	Max. torque cont.	Max. power cont.
MOMV315	1"	200	200	280	315	630	87,3	32
MOMV400	1"	200	200	280	400	500	110,8	40
MOMV500	1"	200	200	280	500	400	138,5	40
MOMV630	1"	200	180	240	630	315	157	40
MOMV800	1"	200	160	210	800	250	177,3	35