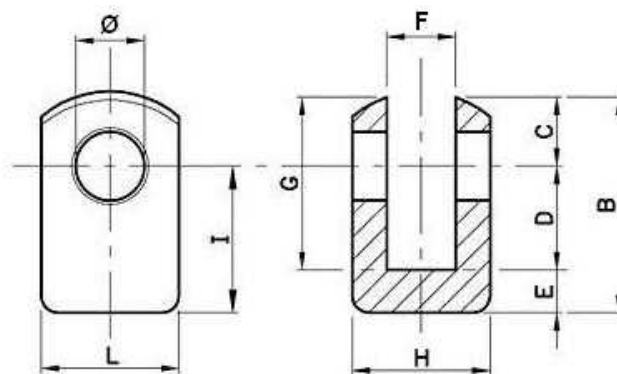


**Yoke to weld**



Part n°	Ø	B	C	D	E	F	G	H	I	L
<b>HOR16</b>	16 H9	50	16	24	10	16	40	32	34	32
<b>HOR20</b>	20 H9	60	20	30	10	20	50	40	40	40
<b>HOR25</b>	25 H9	70	25	32	13	25	57	50	45	50
<b>HOR30</b>	30 H9	80	30	35	15	30	65	55	50	55
<b>HOR35</b>	35 H9	90	35	40	15	35	75	70	55	70